

BATTERIES MONOBLOCS



DOMAINES D'UTILISATION :
FAUTEUILS ROULANTS
BATEAUX ÉLECTRIQUES ET APPLICATIONS DE LOISIRS
VOITURETTES DE GOLF
MACHINES DE NETTOYAGE
NACELLES ÉLEVATRICES
PETITS TRANSPALETTES



MONOBLOCS SEMI-TRACTION PLAQUES PLANES : PP.

- La batterie compacte, souple et économique
- 300 à 400 cycles
- Sollicitation standard



MONOBLOCS US PLAQUES ÉPAISSES : PP_US.

- La batterie à longévité accrue
- 600 à 800 cycles
- Sollicitation intensive



MONOBLOCS PLAQUES TUBULAIRES : PT.

- La batterie de Traction pure
- 1200 cycles
- Sollicitation forte



MONOBLOCS GEL : PPG.

- La batterie sans entretien
- 600 cycles
- Sollicitation douce



MONOBLOCS AGM CARBONE : PPC.

- La batterie sans entretien haute capacité
- 600 cycles
- Sollicitation accrue

BATTERIES MONOBLOCS

| | Type | Tension (V) | C20 (Ah/20h) | C5 (Ah/5h) | Dimensions | | | Poids (Kg) | Polarité / Bornes | |
|------------|------------|-------------|--------------|------------|------------|-----|------|------------|-------------------|------|
| | | | | | L | I | H | | | |
| PP | 12PP50 | 12 | 60 | 50 | 242 | 175 | 190 | 16,6 | 3-A | |
| | 12PP60 | 12 | 75 | 60 | 278 | 175 | 190 | 19,2 | 3-A | |
| | 12PP75 | 12 | 105 | 85 | 353 | 175 | 190 | 24,6 | 3-A | |
| | 12PP80 | 12 | 105 | 80 | 312 | 175 | 212 | 23,3 | 3-A | |
| | 12PP98 | 12 | 120 | 105 | 344 | 172 | 234 | 26,5 | 3-A | |
| | 12PP106 | 12 | 140 | 110 | 344 | 172 | 284 | 31,8 | 3-A | |
| | 12PP115 | 12 | 140 | 110 | 509 | 175 | 208 | 34,3 | 4-A | |
| | 12PP145 | 12 | 180 | 150 | 512 | 223 | 220 | 43,3 | 4-A | |
| | 12PP185 | 12 | 225 | 190 | 518 | 273 | 240 | 56,1 | 4-A | |
| PP_US | 6PP175USK | 6 | 225 | 185 | 259 | 179 | 278 | 28,2 | 1-WNT | |
| | 6PP195USK | 6 | 240 | 195 | 259 | 179 | 278 | 30,0 | 1-WNT | |
| | 6PP210USK | 6 | 260 | 215 | 259 | 179 | 297 | 33,0 | 1-WNT | |
| | 6PP270UST | 6 | 330 | 271 | 308 | 174 | 366 | 42,8 | 1-DP | |
| | 6PP340UST | 6 | 420 | 344 | 308 | 174 | 416 | 51,0 | 1-DP | |
| | 8PP146USK | 8 | 170 | 145 | 262 | 181 | 278 | 28,6 | 2-WNT | |
| | 12PP70USC | 12 | 85 | 69 | 279 | 171 | 238 | 21,5 | 2-UT | |
| | 12PP85USC | 12 | 105 | 85 | 321 | 171 | 238 | 24,5 | 2-UT | |
| | 12PP100USC | 12 | 130 | 98 | 330 | 171 | 241 | 29,5 | 2-UT | |
| | 12PP130USK | 12 | 150 | 125 | 329 | 181 | 278 | 38,5 | 2-WNT | |
| | 12PP166USC | 12 | 210 | 166 | 391 | 178 | 371 | 52,0 | 3-UT | |
| | PT | 6PT175US | 6 | 220 | 175 | 260 | 180 | 280 | 30,6 | 1-UT |
| 6PT195 | | 6 | 260 | 200 | 243 | 189 | 277 | 31,5 | 1-A | |
| 6PT210 | | 6 | 250 | 210 | 244 | 190 | 270 | 32,4 | 1-A | |
| 6PT320 | | 6 | 425 | 320 | 311 | 180 | 365 | 50,5 | 1-A | |
| 12PT55 | | 12 | 60 | 55 | 278 | 175 | 190 | 18,9 | 3-A | |
| 12PT85 | | 12 | 110 | 90 | 303 | 175 | 228 | 28,7 | 3-A | |
| 12PT90 | | 12 | 115 | 95 | 344 | 172 | 234 | 30,4 | 3-A | |
| 12PT120 | | 12 | 140 | 120 | 344 | 172 | 284 | 37,5 | 3-A | |
| 12PT126 | | 12 | 167 | 126 | 510 | 175 | 225 | 39,6 | 5-A | |
| 12PT150 | | 12 | 165 | 145 | 512 | 223 | 220 | 47,5 | 4-A | |
| PPG | | 6PPG180 | 6 | 210 | 180 | 243 | 189 | 273 | 30,0 | 1-A |
| | | 6PPG260 | 6 | 320 | 259 | 295 | 178 | 350 | 41,0 | 1-M8 |
| | 8PPG114US | 8 | 140 | 114 | 262 | 182 | 277 | 32,0 | 2-UT | |
| | 12PPG13 | 12 | 18 | 14 | 181 | 76 | 167 | 5,6 | 3-M5 | |
| | 12PPG50 | 12 | 60 | 50 | 278 | 175 | 190 | 21,3 | 3-A | |
| | 12PPG70 | 12 | 80 | 70 | 353 | 175 | 190 | 25,8 | 3-A | |
| | 12PPG105 | 12 | 125 | 105 | 345 | 173 | 285 | 37,9 | 3-A | |
| | 12PPG130 | 12 | 150 | 130 | 509 | 223 | 222 | 50,5 | 4-A | |
| | 12PPG180 | 12 | 210 | 180 | 518 | 273 | 237 | 68,3 | 4-A | |
| | 12PPG21US | 12 | 26 | 22 | 168 | 178 | 124 | 9,2 | 3-M5 | |
| | 12PPG43US | 12 | 75 | 61 | 279 | 175 | 190 | 22,7 | 3-M6 | |
| | 12PPG155US | 12 | 214 | 178 | 522 | 240 | 222 | 62,5 | 5-M8 | |
| | 12PPG175US | 12 | 263 | 216 | 521 | 269 | 208 | 74,5 | 5-M8 | |
| PPC | 6PPC210 | 6 | 245 | 210 | 243 | 187 | 275 | 32,4 | 1-M8 | |
| | 6PPC192US | 6 | 225 | 192 | 260 | 180 | 253 | 30,5 | 1-M8 | |
| | 6PPC230US | 6 | 268 | 230 | 260 | 180 | 268 | 32,9 | 1-M8 | |
| | 6PPC305US | 6 | 350 | 305 | 295 | 180 | 368 | 48,2 | 1-UT | |
| | 6PPC342US | 6 | 400 | 342 | 295 | 180 | 428 | 54,2 | 1-UT | |
| | 8PPC145US | 8 | 170 | 145 | 260 | 180 | 274 | 29,2 | 2-UT | |
| | 12PPC23 | 12 | 25 | 22,5 | 182 | 77 | 170 | 6,5 | 3-M5 | |
| | 12PPC34 | 12 | 43 | 34 | 268 | 78 | 171 | 10,1 | 3-M5 | |
| | 12PPC122 | 12 | 148 | 122 | 340 | 172 | 286 | 42,6 | 2-M8 | |
| | 12PPC14US | 12 | 15 | 13,5 | 152 | 100 | 100 | 4,0 | 4-M5 | |
| | 12PPC35US | 12 | 39 | 35 | 195 | 130 | 167 | 11,3 | 2-M6 | |
| | 12PPC44US | 12 | 53 | 44 | 197 | 166 | 170 | 14,1 | 3-M6 | |
| | 12PPC57US | 12 | 68 | 57 | 229 | 138 | 217 | 17,5 | 2-M6 | |
| | 12PPC71US | 12 | 82 | 71 | 260 | 168 | 214 | 23,3 | 2-M6 | |
| | 12PPC77US | 12 | 85 | 73 | 260 | 168 | 214 | 23,1 | 2-M8 | |
| | 12PPC96US | 12 | 105 | 88 | 306 | 168 | 214 | 27,3 | 2-M8 | |
| | 12PPC107US | 12 | 115 | 95 | 330 | 173 | 220 | 31,4 | 2-M8 | |
| | 12PPC136US | 12 | 150 | 136 | 327 | 180 | 274 | 41,9 | 2-M8 | |
| 12PPC162US | 12 | 183 | 162 | 483 | 170 | 239 | 50,1 | 2-M8 | | |

Bornes de sortie



A



WNT



UT

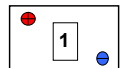


DP

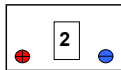


Insert (M..)

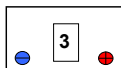
Polarité Bornes



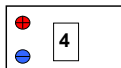
1



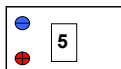
2



3



4



5

Autres formats disponibles. Nous consulter

Tolérance sur le poids (avec électrolyte) : +/- 5%

Les caractéristiques des batteries sont susceptibles de modification sans préavis